

**COREtec<sup>®</sup>**

*the Original*

the  
*essentials*  
collection

EN

IT - ES - PT



FROM ONE TRUE ORIGINAL TO ANOTHER, IT'S A FAMILY AFFAIR!

# What's in your *core*?

The real values in life are those created and found within families; authenticity, trust and the opportunity given to be creative and express yourself. These same values drive our company and they define our corporate culture.

We saw an opportunity to create a better floor. We chased a dream and created a whole new category along the way. As the innovators of COREtec®, the Original, 100% waterproof floor, we did just that. Stylish, strong floors that sustain real family lives full of entertaining, kids and pets.

**Click, lock, enjoy. It is as simple as that!**

It all began as an entrepreneurial business in 2001, within our founder's heart and spare bedroom as our "headquarters". With the invention of COREtec®, the original, patented, 100% waterproof floor in 2013, we grew rapidly to become the leading brand of these unique and highly innovative products.

We launched our European division in 2016 and that same year were acquired and embraced into the family of Shaw Floors, an industry leader and subsidiary of Berkshire Hathaway, led by the world-renowned investor, Warren Buffett.

We've come a long way from where we started to where we are now. But those family values guide us still. Led by management and embraced by every employee, dealer, and partner, we are recognized as the problem-solvers, innovators and design enthusiasts. Today we offer an incredible range of resilient, durable floors that can be purchased, installed and lived upon in one single day. Click, lock, enjoy. It is as simple as that!

The most difficult task will be to choose from our wide variety of life-like decors. But don't worry, you are sure to find one to match your style because we have a floor for every personality.

**WELCOME TO OUR FAMILY,  
WE PROMISE TO REMAIN AUTHENTIC TO THE CORE**

# Your COREtec® floor

Always fits your style & stands up to real life, it's engineered for simplicity.



### Always fits your style

We have a passion for providing a wide selection of authentic natural looks, so you can express what makes you, you. Persistent in product innovation – including micro-beveled edges, enhanced painted bevels & Embossed in Register technology – we create the most appealing designs & textures available.



### Stands up to real life

Our floors are 100% waterproof, kid proof & pet proof. Try them in your kitchen or bathroom: they won't warp or buckle, even if submerged in water.

Our 100% waterproof core, resilient vinyl and protective wear layer will keep your floor looking good for the life of your home. So naturally, all COREtec® floors come with a limited lifetime residential warranty.



### Is engineered for simplicity

COREtec® is easy to install, to care for and to live with. Its secure angle tap system doesn't require any glue or nails and can be installed over existing floors without additional underlayment.

Forget about sanding, polishing, sealing or refinishing: our floors are maintenance-free.



Ocala Walnut 54-50-LVRE-2054



There's a million reasons to choose COREtec®, but here's our top 6.

### Our floors:

- ✓ Are extremely stable
- ✓ Reduce noise
- ✓ Are wear resistant
- ✓ Do not need to acclimatise
- ✓ Are suitable for underfloor heating & cooling
- ✓ Install on any surface






# Cork

## the natural choice

All our floors have a unique attached cork underlayment. Why? It's warmer, quieter and easily installs over existing hard surfaces, perfectly concealing imperfections in subfloors. And: it's one of the most sustainable materials out there. Cork is harvested from the cork tree and can be re-harvested every decade without damaging the tree.

**A natural solution that brings only benefits to your home or business:**

-  Added sound insulation
-  A comfortable and warmer floor
-  A natural protection against mold and mildew
-  No need for separate underlayment
-  Absorbs subfloor imperfections





COREtec<sup>®</sup> floors are  
**that good, somebody else**  
can re-*enjoy* it.

At COREtec<sup>®</sup> Floors, we attach great importance to sustainability. Recycling our multilayer, multicomponent material has a high energy cost, which means that a circular solution with re-use of the flooring is more appropriate. That's why we come up with an environmentally friendly solution: to set up Second Life floors, based on infinite re-use, an approach which is unique in our sector.

As the architects of multilayer waterproof rigid flooring, we are the first manufacturers to set up a take-back service, giving used flooring a new lease of life. These Second Life floors will initially be offered to charitable bodies and youth organisations. Our new service also has a societal dimension, as the business we call on to clean the used flooring employs people with complex barriers to work. They will use specially developed ecologically friendly COREtec<sup>®</sup> products to clean the dismantled flooring, making the old flooring look as good as new.

Thanks to Second Life, your old floor gets a real second chance. And therefore you also contribute to a more sustainable world!

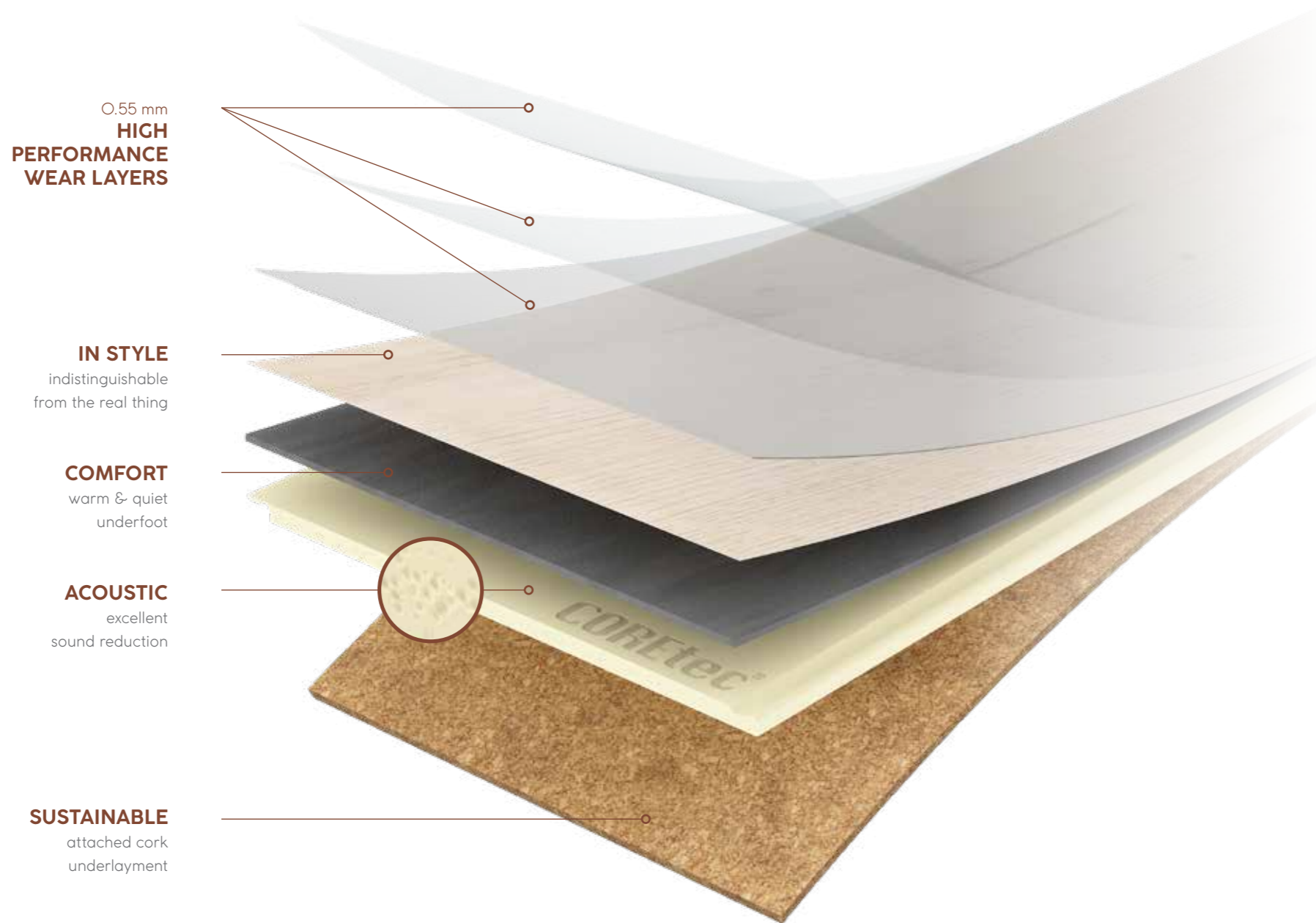




SOUND CORE®

# Silent & strong, down to the *core*

At COREtec®, we're proud to offer the most complete collection of 100% waterproof floors, so you can express what makes you, you.



0.55 mm  
**HIGH PERFORMANCE WEAR LAYERS**

**IN STYLE**  
indistinguishable from the real thing

**COMFORT**  
warm & quiet underfoot

**ACOUSTIC**  
excellent sound reduction

**SUSTAINABLE**  
attached cork underlayment



**100% waterproof**



**Extremely stable**



**No acclimatisation necessary**



**Easy to install**



**Installation on any surface**



**Reduces noise**



**Wear resistant**



**Pet proof**



**Electrostatic performance**



**Ideal for underfloor heating & cooling**



The charm of *nature*

With nature as our main source of inspiration, we succeeded in creating a floor that captures the essence of your home. Whether you prefer soft earth tones or warm darker colours, our wide selection of authentic looks provides the perfect solution for every interior. Make a strong statement by relying on nature.

**The new COREtec® Essentials collection comes with inviting designs, natural textures and a touch of class.**



Baltimore Oak 66-50-LVRE-1266

has never been so *strong*



Painted Oak 99-50-LVPE-1399

the  
*essentials*  
collection





A wide range of *designs*  
*matching* your interior



the  
*essentials*  
collection



**1800 Series** p.18 | **1500 Series** p.34 | **1200 Series** p.46

8 mm | 8,5 mm | 8 mm | 8,1 mm | 8,5 mm | 8 mm

0.55 mm (EN ISO 24340)

6 pcs 2.50 m<sup>2</sup> 21 kg | 6 pcs 1.97 m<sup>2</sup> 18 kg | 6 pcs 2.50 m<sup>2</sup> 21 kg | 6 pcs 2.50 m<sup>2</sup> 21.33 kg | 6 pcs 2.05 m<sup>2</sup> 19.5 kg | 6 pcs 1.62 m<sup>2</sup> 15.41 kg | 10 pcs 2.20 m<sup>2</sup> 18 kg | 12 pcs 2.65 m<sup>2</sup> 23 kg

the essentials collection



**Multi Series** p.60 | **Herringbone Series** p.64 | **Tile Series** p.68

8 mm | 8 mm | 8 mm

0.55 mm (EN ISO 24340)

10 pcs 2.62 m<sup>2</sup> 23.50 kg | 12 pcs 2.50 m<sup>2</sup> 21 kg | 6 pcs 2.18 m<sup>2</sup> 18.79 kg | 8 pcs 2.23 m<sup>2</sup> 18.69 kg | 9 pcs 2.58 m<sup>2</sup> 23.63 kg

What about:

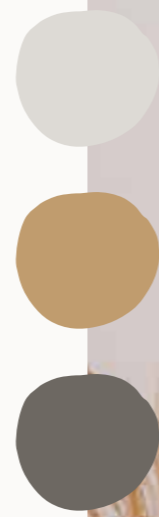
Has bevels on the long sides of the plank.

Has bevels on the long & short sides of the plank.

The embossing follows the structure of the wood for a real-life touch.



The charm of *nature* has never been so *strong*



**1800**  
SERIES

- 1830 x 228 x 8,1 mm
- 1830 x 228 x 8 mm
- 1830 x 180 x 8,5 mm

Minnesota Ash O3 - 50-LVPE-2103





**FREMONT OAK 82**

50-LVRE-2282  
1830 x 228 x 8 mm



**FREMONT OAK 93**

50-LVRE-2293  
1830 x 228 x 8 mm







**MUNSTER OAK 88**

50-LVRE-2388  
1830 x 228 x 8 mm



**MUNSTER OAK 53**

50-LVRE-2353  
1830 x 228 x 8 mm







**GREYSTONE CONTEMPO OAK 34**

50-LVRE-634

1830 x 180 x 8,5 mm



**TIMBERLAND RUSTIC PINE 41**

50-LVRE-641

1830 x 180 x 8,5 mm







**BALTIMORE**  
OAK 95  
50-LVRE-1295  
1830 x 180 x 8,5 mm



**BALTIMORE**  
OAK 77  
50-LVRE-1277  
1830 x 180 x 8,5 mm



**BALTIMORE**  
OAK 66  
50-LVRE-1266  
1830 x 180 x 8,5 mm



**BALTIMORE**  
OAK 84  
50-LVRE-1284  
1830 x 180 x 8,5 mm







**MINNESOTA ASH O3**

50-LVPE-2103  
1830 x 228 x 8 mm



**DOBRA OAK 51**

50-LVPE-951  
1830 x 228 x 8 mm



**TASMAN OAK 50**

50-LVPE-950  
1830 x 228 x 8 mm







**WARWICK OAK 53**  
50-LVPE-953  
1830 x 228 x 8 mm



**ELLIS OAK 54**  
50-LVPE-954  
1830 x 228 x 8 mm



**UNITY OAK 57**  
50-LVPE-957  
1830 x 228 x 8 mm



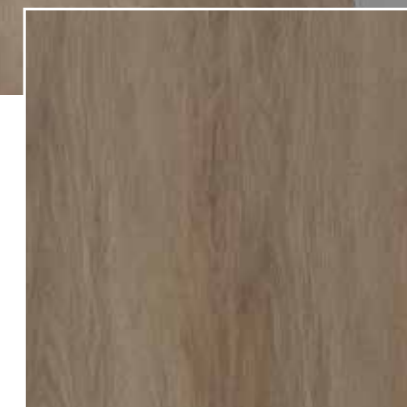
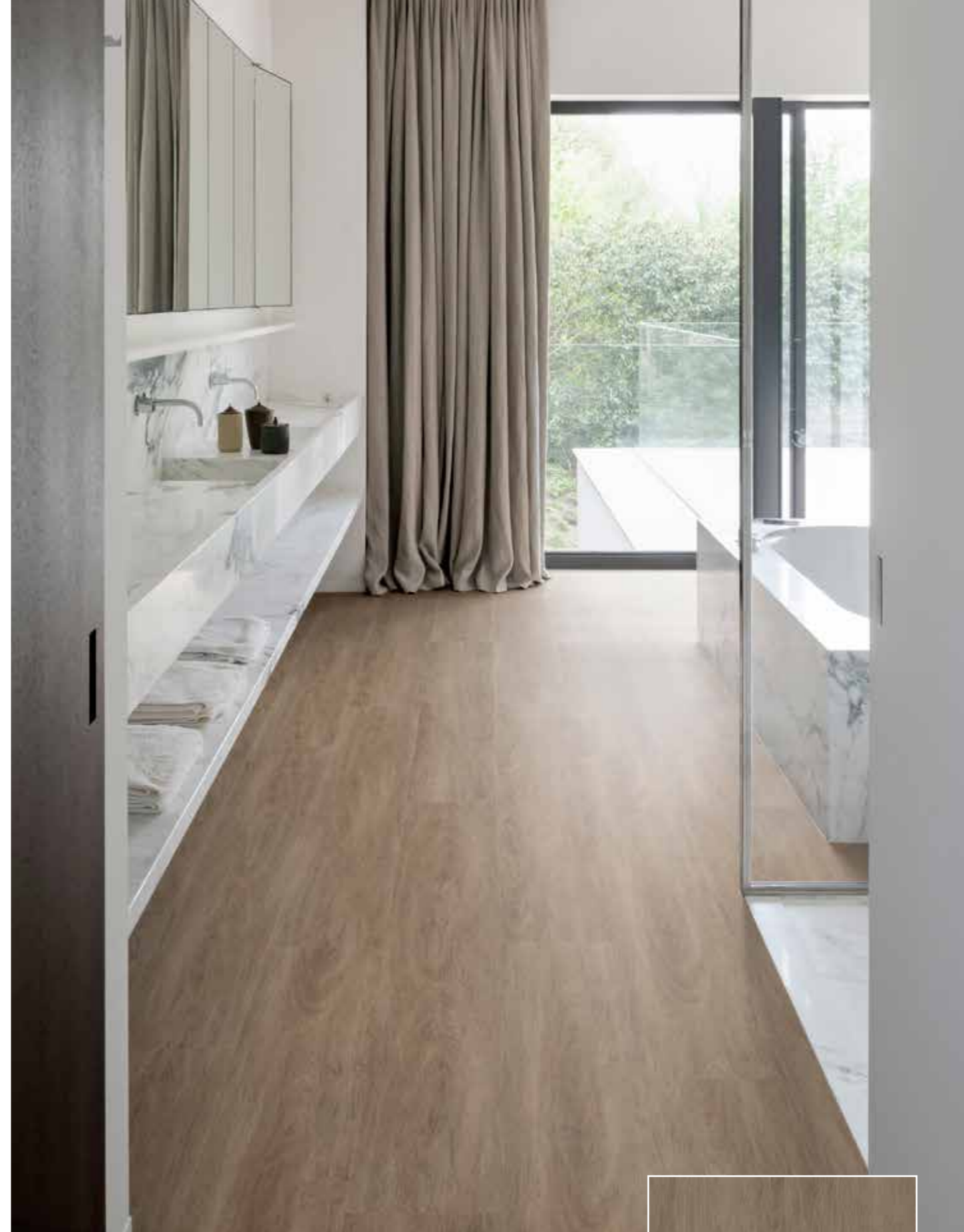




### ALEXANDRIA OAK 14

50-LVP-614

1830 x 228 x 8,1 mm

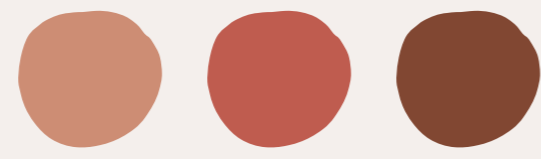


### HIGHLANDS OAK 15

50-LVP-615

1830 x 228 x 8,1 mm





The charm of *nature* has never been so *strong*

**1500**  
SERIES

1500 x 228 x 8,5 mm  
1500 x 180 x 8,5 mm





**OCALA WALNUT 54**

50-LVRE-2054  
1500 x 228 x 8,5 mm



**OCALA WALNUT 87**

50-LVRE-2087  
1500 x 228 x 8,5 mm



**OCALA WALNUT 68**

50-LVRE-2068  
1500 x 228 x 8,5 mm







**JASPER OAK 01**  
 50-LVR-9601  
 1500 x 180 x 8,5 mm



**CLEVELAND OAK 52**  
 50-LVRE-1452  
 1500 x 228 x 8,5 mm



**CLEVELAND OAK 86**  
 50-LVRE-1486  
 1500 x 228 x 8,5 mm







**BOSTON OAK O3**

50-LVR-1903  
1500 x 180 x 8,5 mm



**BOSTON OAK 92**

50-LVRE-1992  
1500 x 228 x 8,5 mm



**BOSTON OAK 78**

50-LVR-1978  
1500 x 180 x 8,5 mm







**GREAT NORTHERN**  
OAK O5  
50-LVR-9605  
1500 x 180 x 8,5 mm



**WATERTON LAKES**  
OAK O4  
50-LVR-9604  
1500 x 180 x 8,5 mm



**PORTLAND OAK 72**  
50-LVR-1872  
1500 x 180 x 8,5 mm







**WIND RIVER OAK O6**

50-LVR-8606

1500 x 180 x 8,5 mm



**SPARWOOD OAK O6**

50-LVR-9606

1500 x 180 x 8,5 mm





The charm of *nature* has never been so *strong*



**1200**  
SERIES  
1220 x 180 x 8 mm  
1220 x 182 x 8 mm





**ENCHANTED OAK 51**

50-LVPE-751  
1220 x 180 x 8 mm



**RUSTLED OAK 50**

50-LVPE-750  
1220 x 180 x 8 mm







**PAINTED OAK O2**

50-LVPE-1302  
1220 x 180 x 8 mm



**PAINTED OAK 99**

50-LVPE-1399  
1220 x 180 x 8 mm







**CLEVELAND OAK 62**

50-LVPE-1462  
1220 x 180 x 8 mm



**CLEVELAND OAK 94**

50-LVPE-1494  
1220 x 180 x 8 mm



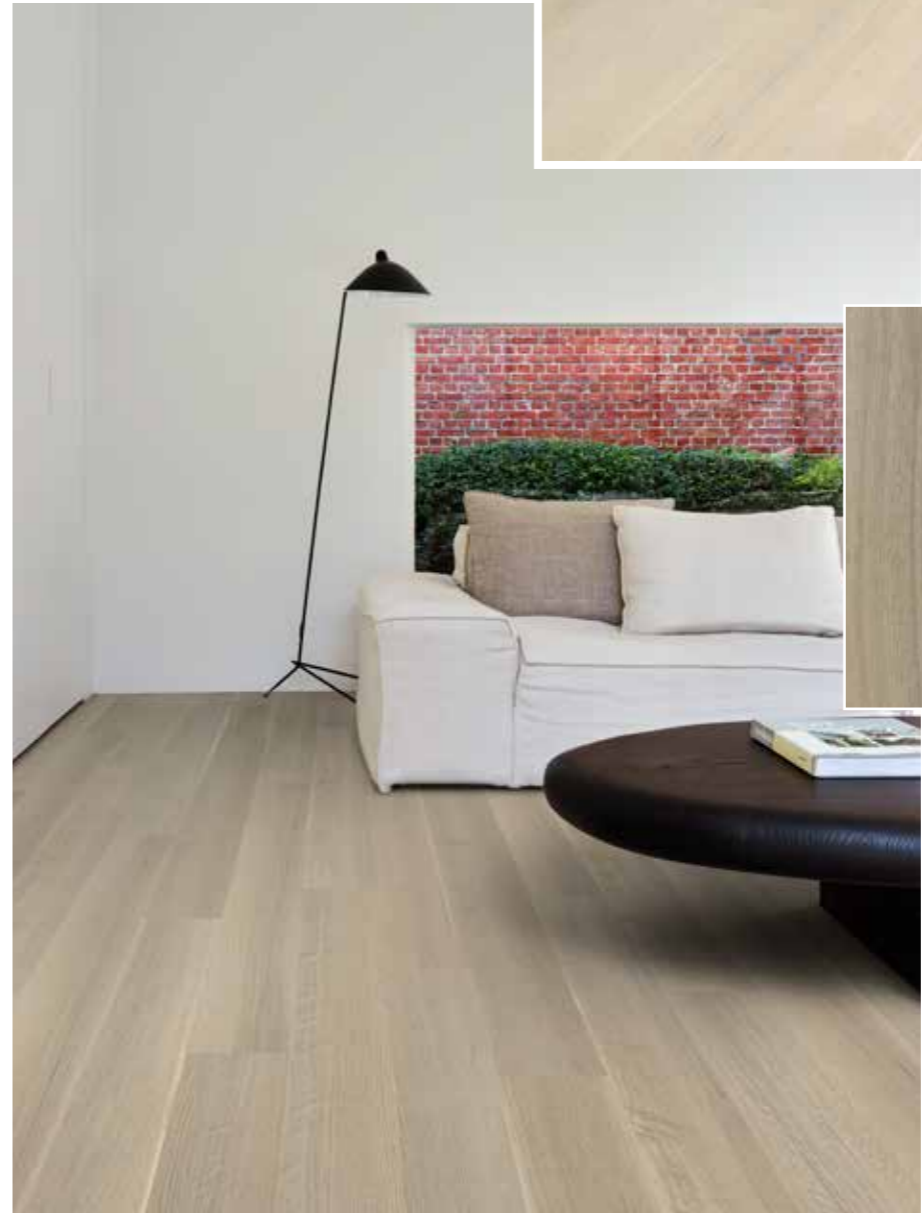




**CHARLESTON OAK 53**  
 50-LVP-1153  
 1220 x 182 x 8 mm



**CHARLESTON OAK 72**  
 50-LVP-1172  
 1220 x 182 x 8 mm



**CHARLESTON OAK 78**  
 50-LVP-1178  
 1220 x 182 x 8 mm





**BLACKSTONE**  
OAK 07  
50-LVP-707  
1220 x 182 x 8 mm  
  
MULTICOLOUR EFFECT



**FALLEN OAK 52**  
50-LVP-752  
1220 x 180 x 8 mm



**BALTIMORE OAK 54**  
50-LVP-1254  
1220 x 182 x 8 mm





**NANTUCKET OAK 11**  
50-LVP-211  
1220 x 182 x 8 mm

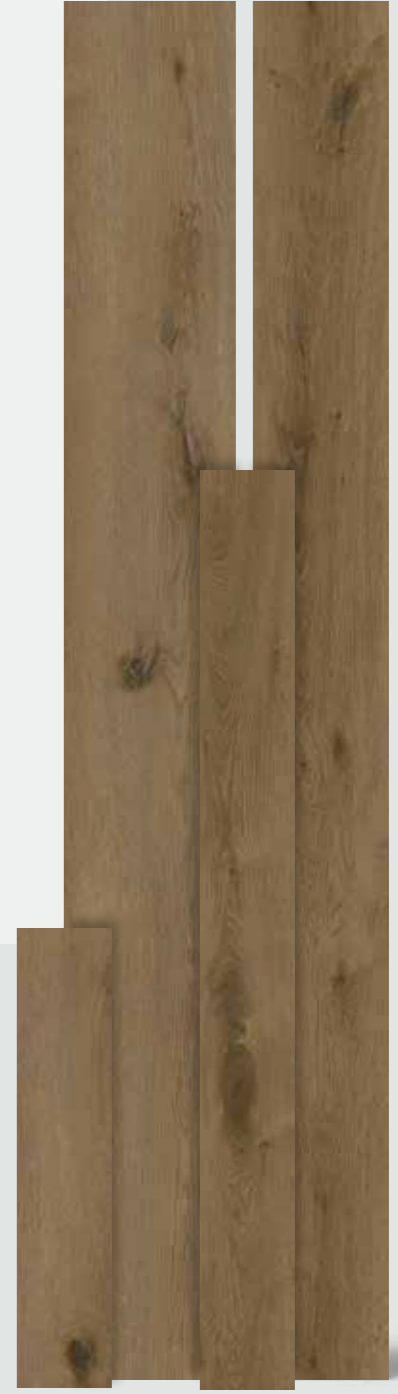


**IVORY COAST OAK 05**  
50-LVP-705  
1220 x 182 x 8 mm

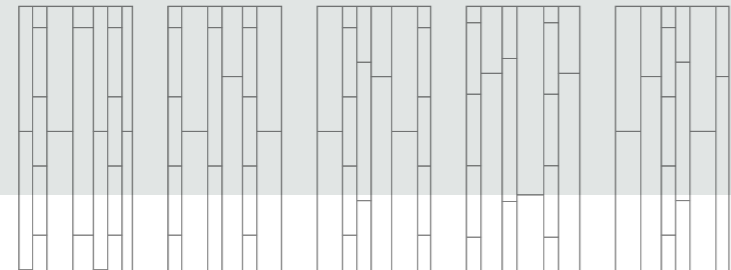




The charm of *nature* has never been so *strong*



Create  
your own style



### MULTI SERIES

1 box contains planks in following dimensions:  
1830 x 228 x 8 mm    1220 x 126 x 8 mm  
1830 x 181 x 8 mm    610 x 126 x 8 mm

Texas Oak M54-50-LVREM-2454





### TEXAS OAK M54

50-LVREM-2454

610 x 126 x 8 mm  
1220 x 126 x 8 mm

1830 x 181 x 8 mm  
1830 x 228 x 8 mm



### TEXAS OAK M71

50-LVREM-2471

610 x 126 x 8 mm  
1830 x 181 x 8 mm  
1220 x 126 x 8 mm  
1830 x 228 x 8 mm



### TEXAS OAK M86

50-LVREM-2486

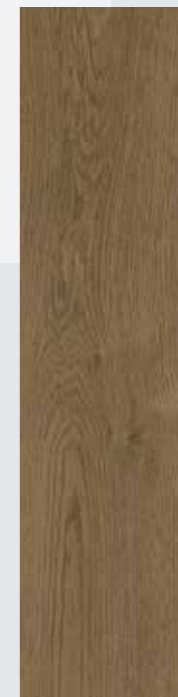
610 x 126 x 8 mm  
1830 x 181 x 8 mm  
1220 x 126 x 8 mm  
1830 x 228 x 8 mm



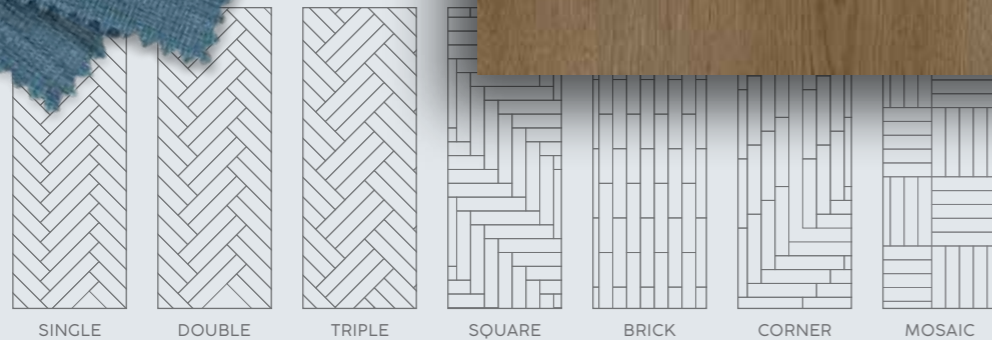




The charm of *nature* has never been so *strong*



Mix & match  
your own style



# HERRINGBONE SERIES

912 x 228 x 8 mm





**TEXAS OAK H71**  
 50-LVRH-2471  
 912 x 228 x 8 mm



**TEXAS OAK H54**  
 50-LVRH-2454  
 912 x 228 x 8 mm



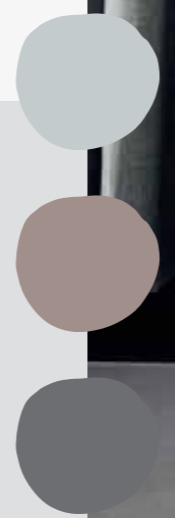
**TEXAS OAK H86**  
 50-LVRH-2486  
 912 x 228 x 8 mm







The charm of *nature* has never been so *strong*



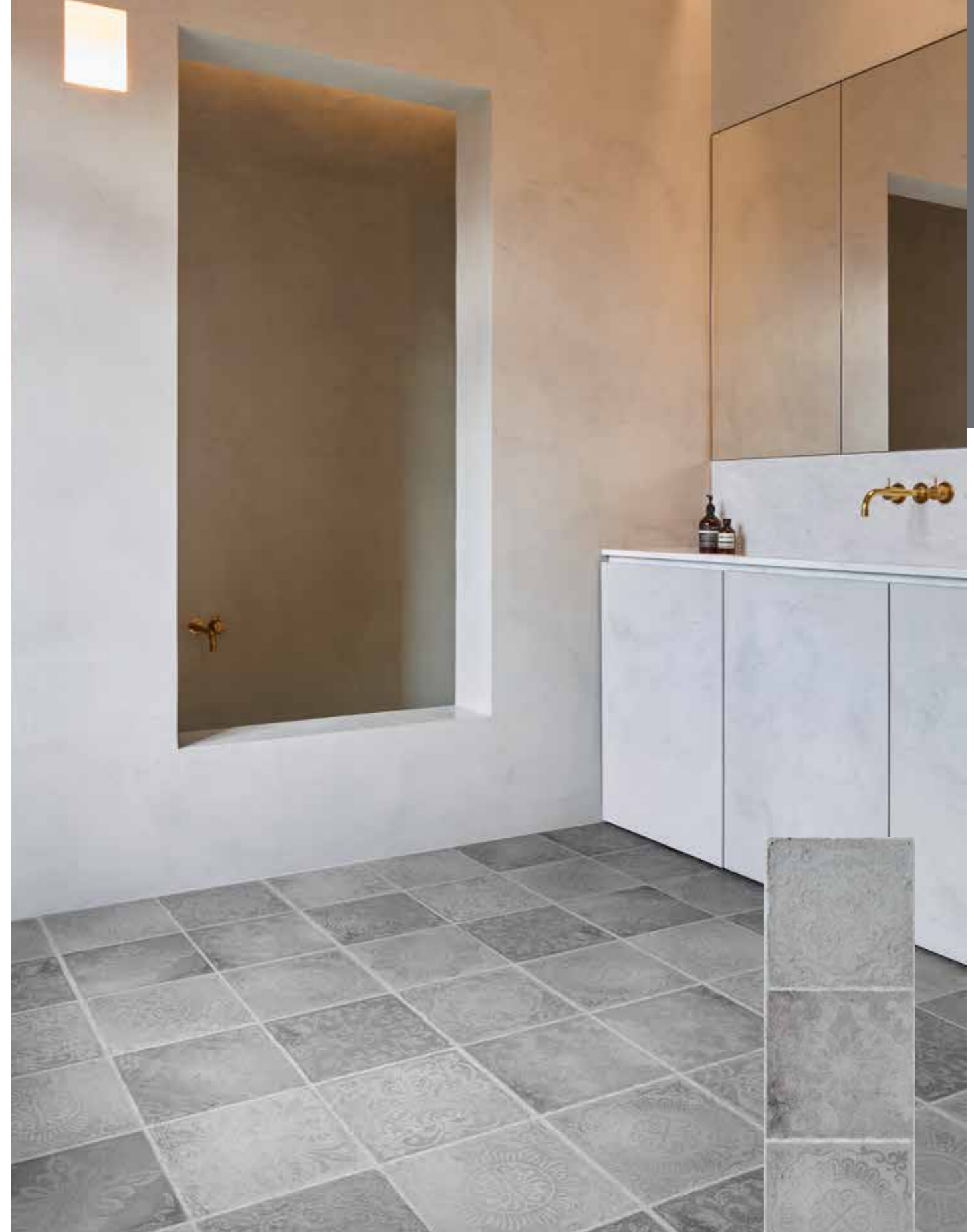
**TILE**  
SERIES

- 610 x 457 x 8 mm
- 610 x 470 x 8 mm
- 1205 x 302 x 8 mm





**RABAT 90**  
50-LVT-1790  
1205 x 302 x 8 mm



**RABAT 94**  
50-LVT-1794  
1205 x 302 x 8 mm

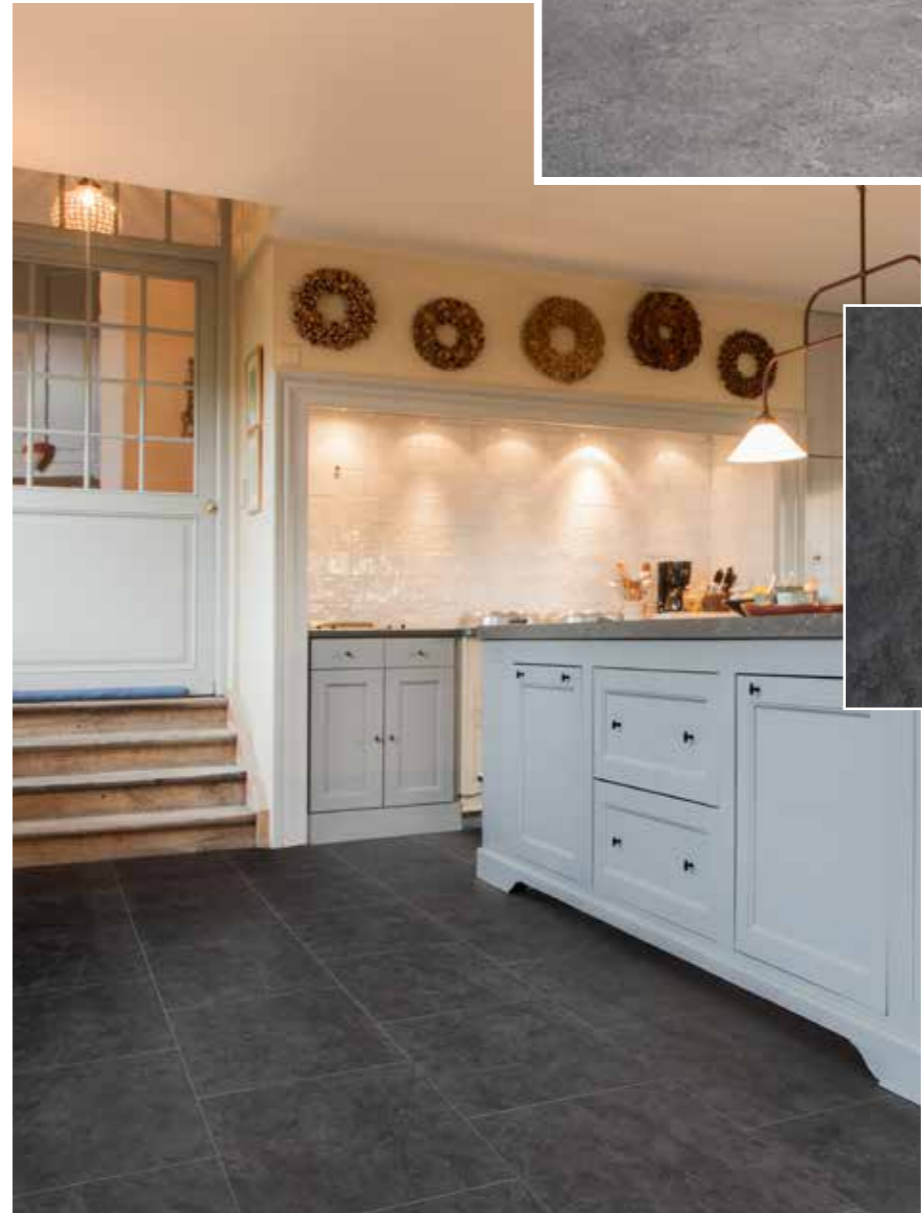




**LYRA 57**  
50-LVTE-1857  
610 x 457 x 8 mm



**AQUILA 50**  
50-LVTE-1850  
610 x 457 x 8 mm



**MENSA 58**  
50-LVTE-1858  
610 x 457 x 8 mm







**COLUMBA 53**  
50-LVTE-1853  
610 x 457 x 8 mm



**VELA 54**  
50-LVTE-1854  
610 x 457 x 8 mm



**COSMIC COPPER 67**  
50-LVT-1567  
610 x 470 x 8 mm





**POLISHED CONCRETE 95**

50-LVT-1695  
610 x 470 x 8 mm



**WEATHERED CONCRETE 03**

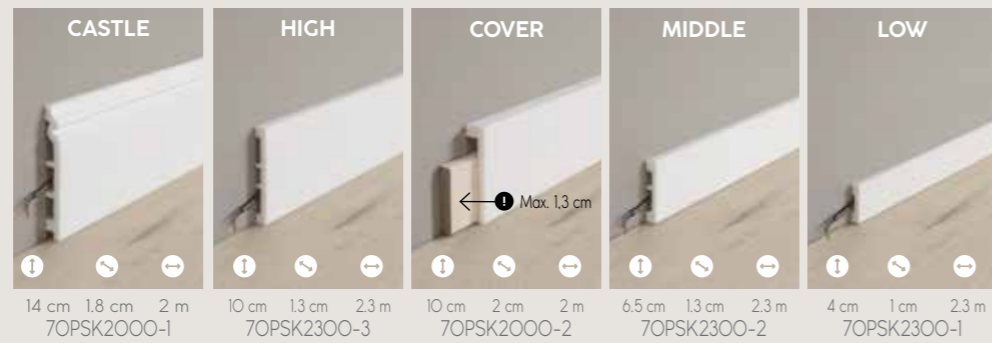
50-LVT-1803  
610 x 470 x 8 mm



## Accessories

### Paintable skirtings

Our paintable skirtings are 100% waterproof & shock resistant.

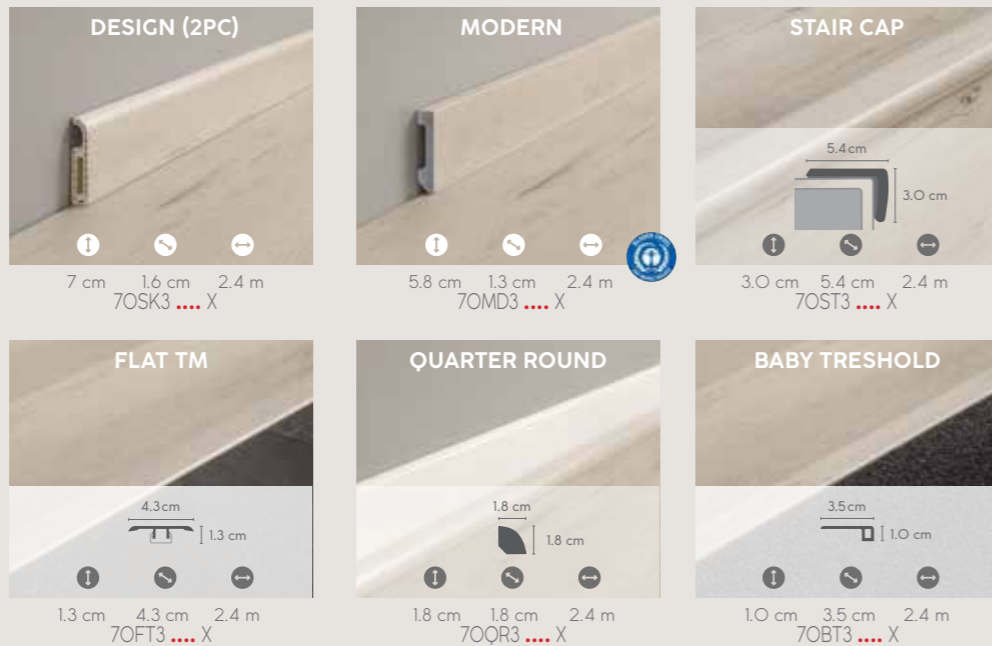


### Matching design accessories

Our design accessories match the design of your floor & are also 100% waterproof & shock resistant.



! .... = Matching design reference

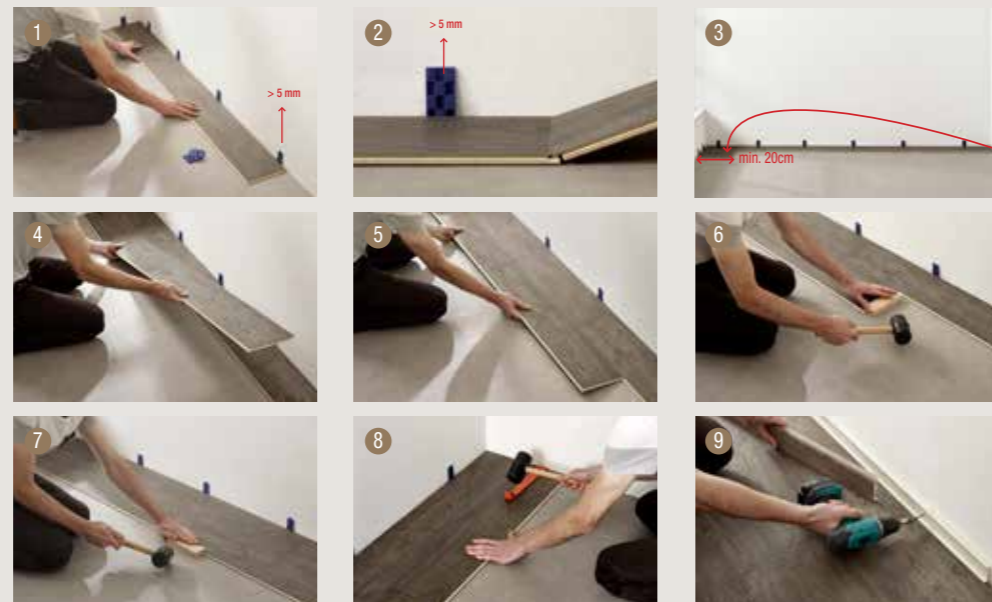


## Installation

### Easy to install

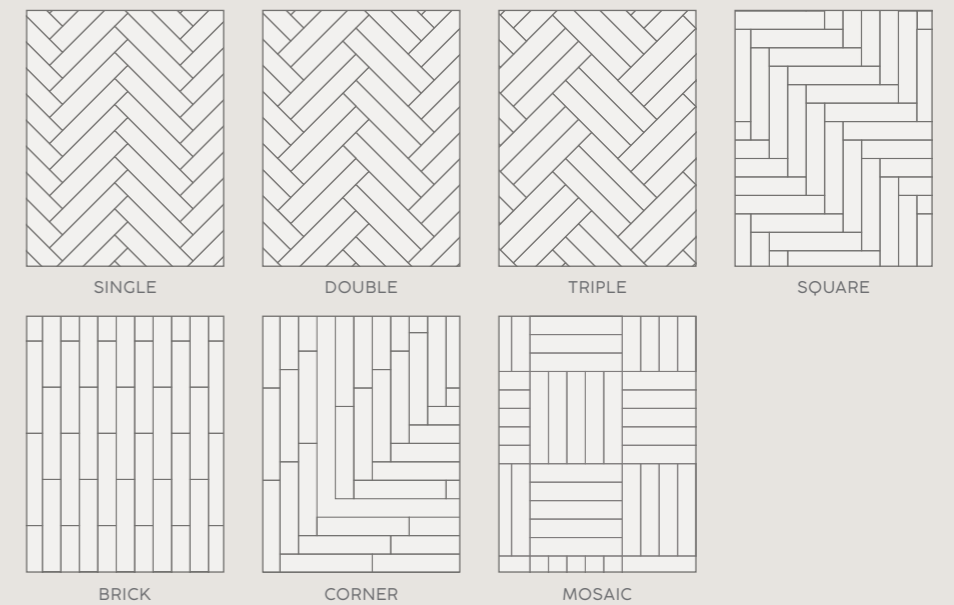
COREtec® floors have the easiest install on the market.

Follow the steps or watch our installation video on our website. [www.coretecfloors.com](http://www.coretecfloors.com)



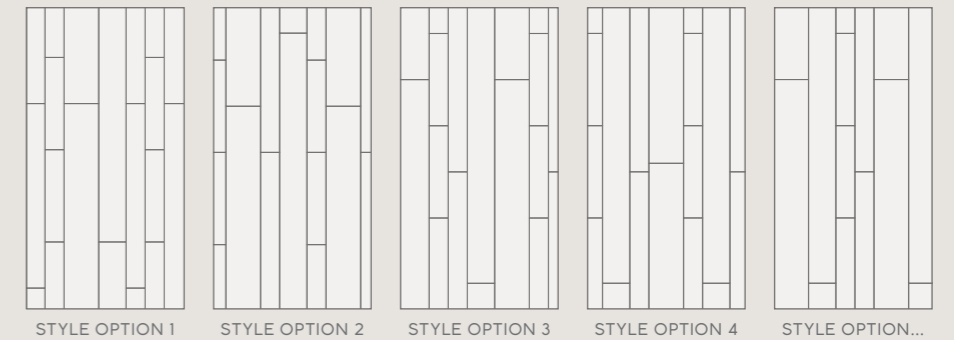
### Herringbone Series variations

Mix & match your own style with the extra-large herringbone planks.



### Multi Series variations

Create your own style with four different plank sizes. The layout you choose is completely up to you!



## Maintenance

### The COREtec® Clean, quick & green kit:

- Daily cleaner
- Deep cleaner
- Stain remover





# Technical specifications

80

## LEVEL OF USE

Classe d'uso /  
Clasificación de uso / Classe de utilização  
Class 23 / 33 (EN ISO 10874)

## GEOMETRICAL CHARACTERISTICS

Fantasia geometriche / Características  
geométricas / Características geométricas  
Conform (ISO 24337)

## WEAR RESISTANCE

Resistenza all'usura /  
Resistencia al desgaste / Resistência ao desgaste  
Pass 5000 cycles (EN 13329 Annex E)

## CASTOR CHAIR RESISTANCE

Resistenza alle sedie con ruote / Resistencia  
a sillas con ruedas / Resistência a cadeira de rodas  
Pass 25000 cycles (ISO 4918)

## EFFECT OF FURNITURE LEG

Effeto furniture leg / Efecto de la pata de  
un mueble / Efeito da perna do móvel  
No visible change (EN 16581)

## RESIDUAL INDENTATION

Indentazione residua certificata /  
Huella residual / Recuo Residual  
 $\leq 0.10$  mm (EN ISO 24343-1)

## RESISTANCE TO STAINING

Resistenza alle macchie /  
Resistencia al manchado / Resistência a manchas  
5 (no visible change) (EN 438-2)

## LOCKING STRENGTH

Chiusura perfetta con sistema a click /  
Resistencia a la tracción / Força de encaixe  
LS  $\geq 2.0$  / SS  $\geq 3.5$  (EN 24334)

## DIMENSIONAL STABILITY

Stabilità dimensionale /  
Estabilidad dimensional / Estabilidade dimensional  
Pass  $\leq 0.25\%$  (EN ISO 23999)

## COLOUR FASTNESS TO LIGHT

Resistenza alla luce / Solidez del color a luz  
artificial / Resistência da cor à luz  
> grade 6 (ISO 105-BO2)

## IMPACT SOUND REDUCTION

Isolamento acustico /  
Aislamiento acústico / Isolamento acústico  
 $\Delta L_w = 20$  dB (ISO 10140-3 / EN 717-2)  
 $\Delta L_{LIN} = 10$  dB (ISO 10140-3 / EN 717-1)

## FORMALDEHYDE EMISSION CLASS

Classe Formaldeide /  
Emisión formaldehído / Classificação formaldeído  
E1 (EN 717-1)

## FIRE CLASSIFICATION

Classe di resistenza al fuoco /  
Resistencia al fuego / Classificação de Fogo  
Bfl - S1 (EN 13501)

## SLIP RESISTANCE

Coefficiente dinamico di attrito /  
Coeficiente de fricción / Coeficiente de atrito  
DS - RIO (EN 13893 - DIN 51130)

## UNDERFLOOR HEATING

Riscaldamento a pavimento / Calefacción por suelo  
radiante / Aquecimento por piso radiante  
Suitable

## ELECTROSTATIC PERFORMANCE

Performance elettrostatica / Rendimiento  
antiestático / Acumulação de cargas eletrostáticas  
 $\leq 2$  kV (EN 1815)

## THERMAL RESISTANCE

Resistenza al calore /  
Aislamiento térmico / Isolamento térmico  
 $0.066$  m<sup>2</sup>-K/W (EN 12667)

Series	Name	SQ Number	Length (mm)	Width (mm)	Thickness (mm)				Pieces/box	M <sup>2</sup> /box	Weight box (kg)	
1800+++	Fremont Oak 82	50 LVRE 2282	1830	228	8	●	●	●	6	2,5	21	
	Fremont Oak 93	50 LVRE 2293	1830	228	8	●	●	●	6	2,5	21	
	Munster Oak 53	50 LVRE 2353	1830	228	8	●	●	●	6	2,5	21	
	Munster Oak 88	50 LVRE 2388	1830	228	8	●	●	●	6	2,5	21	
1800++	Greystone Contempo Oak 34	50 LVRE 634	1830	180	8,5	●	●	●	6	1,97	18	
	Timberland Rustic Pine 41	50 LVRE 641	1830	180	8,5	●	●	●	6	1,97	18	
	Baltimore Oak 66	50 LVRE 1266	1830	180	8,5	●	●	●	6	1,97	18	
	Baltimore Oak 84	50 LVRE 1284	1830	180	8,5	●	●	●	6	1,97	18	
	Baltimore Oak 77	50 LVRE 1277	1830	180	8,5	●	●	●	6	1,97	18	
1800+	Baltimore Oak 95	50 LVRE 1295	1830	180	8,5	●	●	●	6	1,97	18	
	Dobra Oak 51	50 LVPE 951	1830	228	8	●	●	●	6	2,5	21	
	Tasman Oak 50	50 LVPE 950	1830	228	8	●	●	●	6	2,5	21	
	Ellis Oak 54	50 LVPE 954	1830	228	8	●	●	●	6	2,5	21	
	Warwick Oak 53	50 LVPE 953	1830	228	8	●	●	●	6	2,5	21	
1800	Unity Oak 57	50 LVPE 957	1830	228	8	●	●	●	6	2,5	21	
	Minnesota Ash O3	50 LVPE 2103	1830	228	8	●	●	●	6	2,5	21	
	Alexandria Oak 14	50 LVP 614	1830	228	8,1	●	●	●	6	2,5	21,33	
1500+	Highlands Oak 15	50 LVP 615	1830	228	8,1	●	●	●	6	2,5	21,33	
	Boston Oak 92	50 LVRE 1992	1500	228	8,5	●	●	●	6	2,05	19,5	
	Ocala Walnut 87	50 LVRE 2087	1500	228	8,5	●	●	●	6	2,05	19,5	
	Ocala Walnut 54	50 LVRE 2054	1500	228	8,5	●	●	●	6	2,05	19,5	
	Ocala Walnut 68	50 LVRE 2068	1500	228	8,5	●	●	●	6	2,05	19,5	
	Cleveland Oak 86	50 LVRE 1486	1500	228	8,5	●	●	●	6	2,05	19,5	
1500	Cleveland Oak 52	50 LVRE 1452	1500	228	8,5	●	●	●	6	2,05	19,5	
	Jasper Oak O1	50 LVR 9601	1500	180	8,5	●	●	●	6	1,62	15,41	
	Great Northern Oak O5	50 LVR 9605	1500	180	8,5	●	●	●	6	1,62	15,41	
	Waterton Lakes Oak O4	50 LVR 9604	1500	180	8,5	●	●	●	6	1,62	15,41	
	Wind River Oak O6	50 LVR 8606	1500	180	8,5	●	●	●	6	1,62	15,41	
	Sparwood Oak O6	50 LVR 9606	1500	180	8,5	●	●	●	6	1,62	15,41	
	Portland Oak 72	50 LVR 1872	1500	180	8,5	●	●	●	6	1,62	15,41	
	Boston Oak O3	50 LVR 1903	1500	180	8,5	●	●	●	6	1,62	15,41	
	Boston Oak 78	50 LVR 1978	1500	180	8,5	●	●	●	6	1,62	15,41	
1200+	Rustled Oak 50	50 LVPE 750	1220	180	8	●	●	●	10	2,2	18	
	Enchanted Oak 51	50 LVPE 751	1220	180	8	●	●	●	10	2,2	18	
	Painted Oak O2	50 LVPE 1302	1220	180	8	●	●	●	10	2,2	18	
	Painted Oak 99	50 LVPE 1399	1220	180	8	●	●	●	10	2,2	18	
	Cleveland Oak 62	50 LVPE 1462	1220	180	8	●	●	●	10	2,2	18	
	Cleveland Oak 94	50 LVPE 1494	1220	180	8	●	●	●	10	2,2	18	
1200	Ivory Coast Oak O5	50 LVP 705	1220	182	8	●	●	●	12	2,65	23	
	Blackstone Oak O7	50 LVP 707	1220	182	8	●	●	●	12	2,65	23	
	Nantucket Oak 11	50 LVP 211	1220	182	8	●	●	●	12	2,65	23	
	Fallen Oak 52	50 LVP 752	1220	180	8	●	●	●	10	2,2	18	
	Charleston Oak 72	50 LVP 1172	1220	182	8	●	●	●	12	2,65	23	
	Charleston Oak 78	50 LVP 1178	1220	182	8	●	●	●	12	2,65	23	
	Charleston Oak 53	50 LVP 1153	1220	182	8	●	●	●	12	2,65	23	
	Baltimore Oak 54	50 LVP 1254	1220	182	8	●	●	●	12	2,65	23	
	HER-RING-BONE	Texas Oak H71	50 LVRH 2471	912	228	8	●	●	●	A <sup>0</sup> <sub>0</sub> -B <sup>0</sup> <sub>0</sub>	2,5	21
Texas Oak H86		50 LVRH 2486	912	228	8	●	●	●	A <sup>0</sup> <sub>0</sub> -B <sup>0</sup> <sub>0</sub>	2,5	21	
Texas Oak H54		50 LVRH 2454	912	228	8	●	●	●	A <sup>0</sup> <sub>0</sub> -B <sup>0</sup> <sub>0</sub>	2,5	21	
MULTI	Texas Oak M71	50 LVREM 2471	610	126	8	●	●	●	2	2,62	23,5	
			1830	181	8	●	●	●	4			
			1220	126	8	●	●	●	2			
			1830	228	8	●	●	●	2			
	Texas Oak M86	50 LVREM 2486	610	126	8	●	●	●	2	2,62	23,5	
			1830	181	8	●	●	●	4			
			1220	126	8	●	●	●	2			
			1830	228	8	●	●	●	2			
	Texas Oak M54	50 LVREM 2454	610	126	8	●	●	●	2	2,62	23,5	
			1830	181	8	●	●	●	4			
Tile++			1220	126	8	●	●	●	2			
	Rabat 94	50 LVT 1794	1205	302	8	●	●	●	6	2,18	18,79	
	Rabat 90	50 LVT 1790	1205	302	8	●	●	●	6	2,18	18,79	
	Tile+	Aquila 50	50 LVTE 1850	610	457	8	●	●	●	8	2,23	18,69
		Lyra 57	50 LVTE 1857	610	457	8	●	●	●	8	2,23	18,69
Columba 53		50 LVTE 1853	610	457	8	●	●	●	8	2,23	18,69	
Vela 54		50 LVTE 1854	610	457	8	●	●	●	8	2,23	18,69	
Mensa 58		50 LVTE 1858	610	457	8	●	●	●	8	2,23	18,69	
Tile	Weathered Concrete O3	50 LVT 1803	610	470	8	●	●	●	9	2,58	23,63	
	Cosmic Copper 67	50 LVT 1567	610	470	8	●	●	●	9	2,58	23,63	
	Polished Concrete 95	50 LVT 1695	610	470	8	●	●	●	9	2,58	23,63	

81



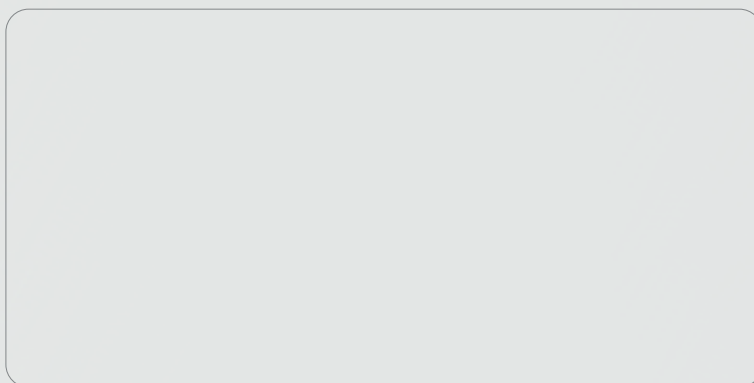


COREtec®, the natural choice



Warranty (Years) The warranty covers manufacturing defects and premature wear in the event of normal use.





Souverainestraat 27 - 9770 Kruisem (Belgium)  
info@usfloors.be · www.coretecfloors.com